

The JA-112J BUS panic / ON / OFF wall button

The JA-112J bus panic/on/off wall button serves for panic alarm triggering or for PG output control. The product is a component of the **JABLOTRON 100** system. The button also has 2 control buttons and an indication LED. The product should be installed by a trained technician with a valid certificate issued by an authorised distributor.

Installation

If this product is used as a panic button, then it has to be mounted with a plastic base and an enabled base tamper contact.

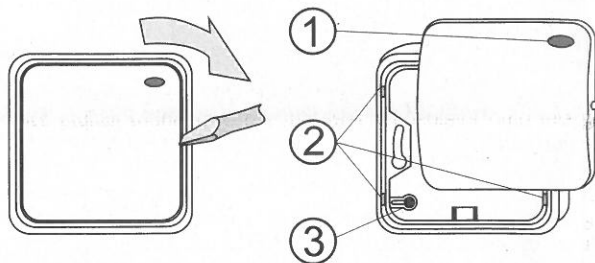


Figure: 1 – LED indicator visor, 2 – Base plastic tabs, 3 – Permanent magnet

1. Open the movable cover (by a screwdriver from the side, see figure 1).
2. Release the bottom plastic base by pressing the 4 tabs in the corners (2).
3. Pull the digital BUS cable through the plastic base and attach the box to a suitable place using screws.
4. Assemble the PCB part into its plastic frame. If the plastic base is used then it is necessary to move the permanent magnet (3) of the tamper contact from the plastic frame which holds the PCB to the receptacle on the plastic base.
5. Connect the BUS cable to the BUS terminals (7).



When connecting the button to the system BUS, always switch the power off.

6. Close the button by the movable cover. Proceed according to the control panel installation manual. Basic procedure:
 - a. When the button is switched on, the yellow LED (5) flashes and indicates that the button has not been enrolled into the system.
 - b. Go to the **F-Link** software, select the required position in the *Devices* window and launch the enrollment mode by

Setting the button properties

Go to the *Devices* window in the **F-link** software. On the line where the button is click on **Internal settings** option to open a dialogue window where you can set:

LED activity indication: This parameter allows LED indication when the button is pressed. For instance when a panic alarm is triggered, then the button blinks red. In this activation function, pressing the button makes the LED flash for a preset time. PG control is also signalled by the LED, PG ON = red, PG OFF = green.

Activation delay (s): There is the possibility to activate one of the selected reactions (panic, fire,..) with a delay in the interval 0 – 99 s, set this time in *Internal settings*.

Note: If the button is pressed again during the delay, then activation is cancelled.

Lower tamper contact disabled: If needed the lower tamper contact can be disabled. When the button is used as a panic button then the lower tamper has to be enabled.

PG controls determines the method of PG control:

- **PG ON/ PG OFF:** By pressing button A the PG output is turned on and by pressing button B the PG output is turned off.
- **PG ON:** By pressing the A or B button the PG output is only turned on.
- **PG OFF:** By pressing the A or B button the PG output is only turned off.

Technical specifications

Power	from the control panel digital BUS 12 V (9-15V)
Current consumption in standby mode	5 mA
Current consumption for cable choice	5 mA
Dimensions, weight	80 x 80 x 29 mm, 60g
Operational environment according to EN 50131-1 II. Indoor general	
Operation temperature range	-10 to + 40 °C
Classification	EN 50131-1, EN 50131-3, Grade 2
EN 50134-2	
Also complies with	EN 50130-4, EN 55022, EN 50581



JABLOTRON ALARMS a.s. hereby declares that the JA-112J is in a compliance with the relevant Union harmonisation legislation: Directives No: 2014/30/EU, 2011/65/EU. The original of the conformity assessment can be found at www.jablotron.com - Section Downloads.



Note: Although this product does not contain any harmful materials we suggest you return the product to the dealer or directly to the producer after use.